



PowerShot SX130 IS

Firmware Update Procedure

The various functions of the Digital Camera are carried out by "firmware," software that controls the camera's operation. The following procedure describes how to download to your computer the data used to update your camera's firmware. To perform this procedure, a commercially available SD/SDHC memory card with a capacity of at least 8 MB is required.

Important: Precautionary Notes for Updating Firmware

When updating firmware, operate the camera with four brand-new alkaline AA batteries, or fully charged NiMH batteries NB4-300 (sold separately).

Initialize the memory card that is to be used for the firmware update with the camera beforehand. Please note that when you initialize the memory card, data that is written to the card will disappear.

Make sure not to disconnect the power of the camera when updating the firmware. In addition, do not open the battery cover or carry out any button operations.

Once the firmware is updated, you cannot restore the firmware back to its previous version by updating it again.

Read the precautionary notes above carefully before updating the firmware.

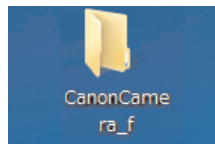
Step 1. Extracting the Firmware Update Data

Double-click Firmware update data (compressed file) that was downloaded from the Web site to extract it.

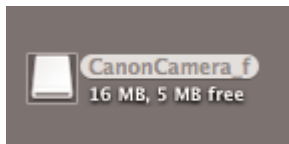
If the file is already extracted, there is no need to extract it again.

Once the file is extracted, a folder (or drive, for Mac OS X) that contains files that are required for the update will be created.

Folder (Drive) Name: CanonCamera_f



ex. Windows

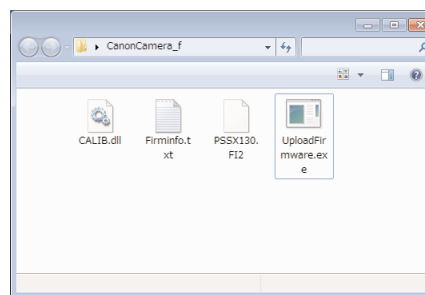


ex. Mac OS X

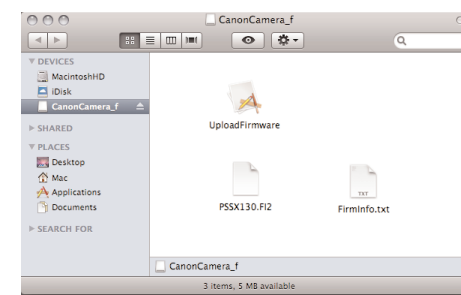
The downloaded files should be extracted on the same computer used for the firmware update.

Step 2. Preparing the Memory Card for the Firmware Update

Start the transfer software UploadFirmware that is included in the extracted folder.



ex. Windows



ex. Mac OS X

Go through the steps that are shown on the screen of UploadFirmware.

At this time, you will need to:

- insert the memory card (at least 8MB) into the camera, and then initialize the card*.
- connect the camera with the computer using the USB cable.

* Please note that when you initialize the memory card, data that is written to the card will disappear.

After you have gone through all the steps for UploadFirmware, the memory card for the firmware update will be created.

Turn off the camera power, remove the USB cable between the computer and the camera, and then exit UploadFirmware.

Do not remove the battery and the memory card from the camera.

Step 3. Updating the firmware

Check whether the memory card that was created in Step 2 is inserted into the camera.

(1) Turn off the power of the camera, and then start the camera back in the Playback Mode by pressing the playback button.

(2) Press the MENU button to display the Playback Menu on the LCD monitor.

When the lens is extended, "Firm Update..." will not display on the Playback Menu (ex. the case switch playback mode after starting up the camera with shooting mode).

(3) Press the up/down button, and then select the menu item [Firm Update...].

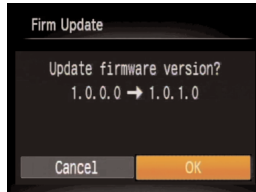
If [Firm Update...] does not display, repeat the procedure from Step 2.
If the problem still persists, please contact our service centers.



(4) Press the SET button to display the version change confirmation screen.

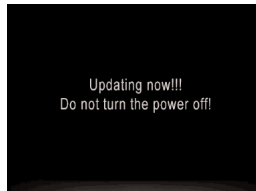
If the update has already been completed, Update already is displayed.

(5) Press the left/right button to select OK.



(6) Press the SET button and the camera will start the firmware update.

Once the update starts, the message "Updating now!!! Do not turn the power off!" will appear on the LCD monitor, and then the indicator will light up and blink.



After around a minute, the camera will switch off automatically. At this point, the process of rewriting the firmware is complete.

If the message "Updated Error!" is displayed on the LCD monitor, repeat the procedure from Step 2.

During the firmware updating process, if the beeping sound does not stop, or if the indicator does not switch off and the firmware update does not complete after 10 minutes, remove the battery from the camera and contact our service centers.

Step 4. Confirming the Completion of Firmware Update

Check whether the memory card that was used for the firmware update is inserted into the camera.

(1) Turn off the power of the camera, and then start the camera in the Playback Mode.

(2) Press the MENU button to display the Playback Menu on the LCD monitor.

(3) Press the up/down button, select the Firm Update menu item, and then press the SET button.

If the update has already been completed, Updated already will display.



At this point, the process of completing of Firmware Update.

After having confirmed that the firmware has been updated, initialize the memory card. In addition, delete from your computer the files that were used for the firmware update.